



# NEWSLETTER

FRIDAY 28TH JUNE 2024

Dartmoor  
Multi Academy  
Trust

...everyone in our Trust.

Dear North Tawton Families,

As always, our pupils and staff have been hard at work! Please click here for their latest news!

[Sycamore Class](#)

[Hazel Class](#)

[Ash Class](#)

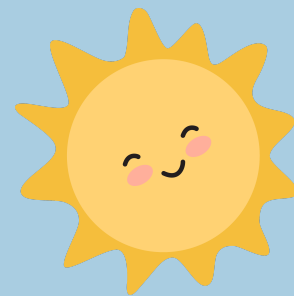
[Willow Class](#)

[Beech Class](#)

[Chestnut Class](#)

[Oak Class](#)

[Acorn Class](#)



Today, staff across the Foundry hub have met together to continue our professional learning and development together. In the morning we had training and discussion about safeguarding and SEND. This afternoon KS1 and KS2 colleagues met to embed teaching handwriting and spelling. Our EYFS colleagues met to discuss the foundations stage curriculum for the year ahead.

Tomorrow is our long awaited FontsFest! The weather looks great - it may not be glorious sunshine, but there is no rain forecast! Hurrah! Come along to the school for lots of fun.

**SATURDAY 29 JUNE**

**FontsFest**

*North Tawton* PRIMARY SCHOOL

**FEATURING** **11AM - 5PM**

CIRCUS WORKSHOP ★ FIREBLOCKERS  
BIRDS OF PREY ★ BAR BY LONDON INN  
ZUMBA SESSION WITH KATIE ★ FOOD STALLS  
FREE GAMES CRAFTS ★ RAFFLE

**TICKETS** £15 GROUP 4 PEOPLE ★ £5 SINGLE

FOR MORE INFORMATION [friendsofnorthtawton@gmail.com](mailto:friendsofnorthtawton@gmail.com)

## North Tawton Advocate News

I am delighted that Anande James is our Advocate for North Tawton! This is a new role within our leadership structure. This is a voluntary position.

Here is her introduction:

Hi! My name is Anande James and I am super excited to be your new Community Advocate. As an Advocate my main aim is to work in partnership with the school leaders at North Tawton Primary, and the trustees of the Primary Advocacy Board, to visit the school on a termly basis, meet with the pupils, staff, and the wider school community to look at information, evidence concerns and progress and most importantly listen to views.

My goal in this role is to support in the best way that I can by enabling that every child has access to the education and support they need to thrive in their school life.

Just a little bit about me - my professional background is in Law and Governance. Currently I work in HR for Libraries Unlimited but from the 1st of August, I will be joining the Dartmoor Multi Academy Trust as a Governance Professional, alongside my Advocate role here at North Tawton, as well as my Parent/Pupil Advocate role at South Tawton Primary.

If you have any concerns you'd like to share or questions you'd like to ask around the general education, safeguarding or wellbeing of your child and the school, feel free to email me at [ajames@dmatschools.org.uk](mailto:ajames@dmatschools.org.uk) and I will endeavour to respond as soon as I can between the working hours of 10am to 3pm, Monday to Friday.

Alternatively, you can catch me for a quick chat at the school gates on selected days that will be announced in advance.



## Attendance Questions

### What are the risks of missing a day of school?

Every moment in school counts, and days missed add up quickly. For example, a child in Year 10 who is absent for three days over a half term could miss 15 lessons in total. The higher a pupil's attendance, the more they are likely to learn, and the better they are likely to perform in exams and formal assessments. Data from 2019 shows that 84% of Key Stage 2 pupils who had 100% attendance achieved the expected standard, compared to 40% of pupils who were persistently absent across the key stage.

### What if my child needs to miss school?

Parents and carers have a legal duty to ensure your child gets a full time-education. Usually, that means going into school from the age of 5 to 16. There are only a small number of circumstances where missing a school day is permitted. Your child must attend every day that the school is open, unless:

- Your child is too ill to attend.
- You have asked in advance and been given permission by the school for your child to be absent on a specific day due to exceptional circumstances.
- Your child cannot go to school on a specific day because they are observing a religious event.
- Your local authority is responsible for arranging your child's transport to school and it's not available or has not been provided yet.
- Your child does not have a permanent address and you are required to travel for work. This exception only applies if your child attends their usual school or another school where you are staying as often as possible. This must be 200 half days or more a year if they are aged 6 or older.

These are the only circumstances where schools can permit your child to be absent.

### What counts as an exceptional circumstance?

School leaders are responsible for deciding what counts as an exceptional circumstance when it comes to a child missing school. They should look at each application individually, considering the specific facts and background context. If a leave of absence is granted, the school will decide how long the pupil can be away from school.

Holidays are very rarely an acceptable reason for a school absence and are unlikely to be treated as an exceptional circumstance.





SATURDAY 29 JUNE



North Tawton PRIMARY SCHOOL

FEATURING

11AM - 5PM

CIRCUS WORKSHOP ★ FIREBLOCKERS  
BIRDS OF PREY ★ BAR BY LONDON INN  
ZUMBA SESSION WITH KATIE ★ FOOD STALLS  
FREE GAMES CRAFTS ★ RAFFLE

**TICKETS** £15 GROUP 4 PEOPLE ★ £5 SINGLE

FOR MORE INFORMATION [friendsofnorthtawton@gmail.com](mailto:friendsofnorthtawton@gmail.com)



# School Term Dates September 2024 – August 2025

September						
Mo	Tu	We	Th	Fr	Sa	Su
					1	
2	3	4	5	6	7	8
9	10	11	12	13	14	15
16	17	18	19	20	21	22
23	24	25	26	27	28	29
30						

October						
Mo	Tu	We	Th	Fr	Sa	Su
	1	2	3	4	5	6
7	8	9	10	11	12	13
14	15	16	17	18	19	20
21	22	23	24	25	26	27
28	29	30	31			

November						
Mo	Tu	We	Th	Fr	Sa	Su
				1	2	3
4	5	6	7	8	9	10
11	12	13	14	15	16	17
18	19	20	21	22	23	24
25	26	27	28	29	30	

December						
Mo	Tu	We	Th	Fr	Sa	Su
					1	
2	3	4	5	6	7	8
9	10	11	12	13	14	15
16	17	18	19	20	21	22
23	24	25	26	27	28	29
30	31					

January						
Mo	Tu	We	Th	Fr	Sa	Su
		1	2	3	4	5
6	7	8	9	10	11	12
13	14	15	16	17	18	19
20	21	22	23	24	25	26
27	28	29	30	31		

February						
Mo	Tu	We	Th	Fr	Sa	Su
					1	2
3	4	5	6	7	8	9
10	11	12	13	14	15	16
17	18	19	20	21	22	23
24	25	26	27	28		

March						
Mo	Tu	We	Th	Fr	Sa	Su
					1	2
3	4	5	6	7	8	9
10	11	12	13	14	15	16
17	18	19	20	21	22	23
24	25	26	27	28	29	30
31						

April						
Mo	Tu	We	Th	Fr	Sa	Su
	1	2	3	4	5	6
7	8	9	10	11	12	13
14	15	16	17	18	19	20
21	22	23	24	25	26	27
28	29	30				

May						
Mo	Tu	We	Th	Fr	Sa	Su
			1	2	3	4
5	6	7	8	9	10	11
12	13	14	15	16	17	18
19	20	21	22	23	24	25
26	27	28	29	30	31	

June						
Mo	Tu	We	Th	Fr	Sa	Su
						1
2	3	4	5	6	7	8
9	10	11	12	13	14	15
16	17	18	19	20	21	22
23	24	25	26	27	28	29
30						

July						
Mo	Tu	We	Th	Fr	Sa	Su
	1	2	3	4	5	6
7	8	9	10	11	12	13
14	15	16	17	18	19	20
21	22	23	24	25	26	27
28	29	30	31			

August						
Mo	Tu	We	Th	Fr	Sa	Su
				1	2	3
4	5	6	7	8	9	10
11	12	13	14	15	16	17
18	19	20	21	22	23	24
25	26	27	28	29	30	31

Bank Holiday	Inset day	Occasional days
School Holidays	Nursery Closed	